

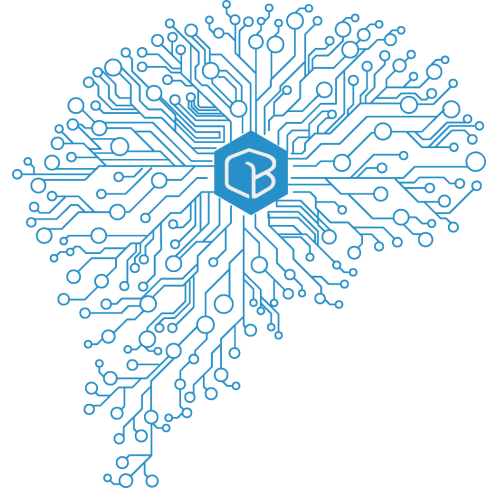
CrushBank AI as a Service: A Game-Changer for Your Business. Now Available for Your Clients

Drive New Revenue by Reselling AI to your Clients

CrushBank AI as a Service

CrushBank AI as a Service is an AI-driven platform designed to streamline information retrieval and workflow within organizations. Built with IBM watsonx, CrushBank delivers fast, accurate, and contextually relevant responses and allows you to build powerful data applications. For your business, CrushBank is a game-changer for IT support – speeding ticket closures and reducing escalations and also a great way to find business information you need.

Now, you can resell CrushBank's technology as a service to your clients across any industry—from healthcare to manufacturing, finance, and beyond. Help them streamline their operations, reduce costs, and differentiate your company by offering a powerful AI tool that goes far beyond traditional public AI for business purposes.



Why Choose CrushBank AI as a Service?

Built with IBM watsonx for Precision and Security

CrushBank is built on IBM watsonx, ensuring a reliable, robust AI system designed for enterprise use. This means it delivers precise, secure, and contextualized responses tailored to the specific data and needs of each business. Generic public AI models simply can't offer the same level of performance, accuracy, or customization.



Real Benefit

Clients gain access to an AI solution that learns from their specific datasets and respects their security protocols, delivering reliable information without exposing them to the risks of public AI.



MSP Differentiation

By reselling CrushBank, you provide a premium, enterprise-grade AI solution, distinguishing yourself from competitors that offer generic, less secure AI products.

The Business Benefits of CrushBank for Your Clients



Be the Provider that Brings Trustworthy AI to Their Business Processes

By offering CrushBank, you empower clients with a reliable, business-specific AI solution that enhances their internal processes. CrushBank is built to meet the demands of diverse industries, offering personalized, precise responses to complex queries.



Protect and Respect Your Client Relationships

CrushBank ensures the security and privacy of your clients' data. As an MSP, you can trust that CrushBank will protect your client relationships and provide them with AI solutions that respect their operational boundaries.



Show Them How to Improve Efficiency, Reduce Costs, Enhance Customer Experiences, and Drive Innovation

CrushBank helps businesses operate more efficiently by automating routine tasks, delivering rapid solutions to IT problems, and facilitating cross-department information searches. This allows businesses to focus on innovation and strategic growth.



Build a Private Data Lake for Each Client

With every deployment, CrushBank builds a secure, private data lake that stores and organizes each client's data. This means smarter, more personalized AI responses based on their unique business information.

Take the Next Step

Help your clients transform their business and drive new revenue opportunities for your company. Contact us today to learn more about reselling CrushBank.



516.802.7200



info@crushbank.com



CrushBank.com

How Reselling CrushBank AI as a Service Drives Revenue



You Make Margin on AI

Reselling CrushBank provides an additional revenue stream through MRR and professional services on AI solutions. As a reseller, you can earn recurring revenue on every sale, increasing your overall profitability.



Sales Training Provided

CrushBank equips you with the training and resources needed to effectively sell and position AI solutions. From product knowledge to strategy, your sales team will be fully prepared to demonstrate the value of CrushBank to your clients.



Competitive Differentiation

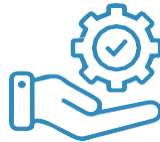
CrushBank allows you to offer a next-generation, AI-powered solution that differentiates your MSP from competitors. This positions your business as an innovator and leader in the MSP space.

Why Partner with CrushBank?



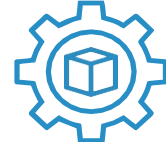
Easy Integration

CrushBank seamlessly integrates with your clients existing systems of record and data repositories.



Dedicated Support

You'll have access to dedicated support to ensure smooth deployment and ongoing success.



Customizable Packages

Flexible reselling options tailored to your business needs and your clients' specific requirements.

Typical Client Use Cases

✔ **Healthcare:**
Retrieving patient discharge summaries, clinical guidelines, and treatment protocols from archived reports to assist healthcare providers.

✔ **Retail:**
Accessing product manuals, return policies, and sales reports from internal documentation to assist customer service representatives.

✔ **Non-profits:**
Pulling up grant applications, donor reports, and impact assessments from past projects to support fundraising and reporting efforts.

✔ **Legal:**
Retrieving legal briefs, case files, and court rulings from document archives to assist in case preparation or client communication.

✔ **Construction:**
Accessing building plans, safety reports, and inspection documents to assist project managers and ensure compliance.

✔ **Education:**
Retrieving course details, academic policies, and student progress reports to assist administrative staff and support students.

✔ **Hospitality:**
Pulling up guest feedback reports, service guidelines, and event documentation to provide personalized guest service and resolve issues.

✔ **Transportation:**
Accessing maintenance logs, safety reports, and incident documentation to help ensure smooth operations and regulatory compliance.

Take the Next Step

Help your clients transform their business and drive new revenue opportunities for your company. Contact us today to learn more about reselling CrushBank.

📞 516.802.7200

✉ info@crushbank.com

🌐 [CrushBank.com](https://www.crushbank.com)